

Garderie, Mondcange (LUX)

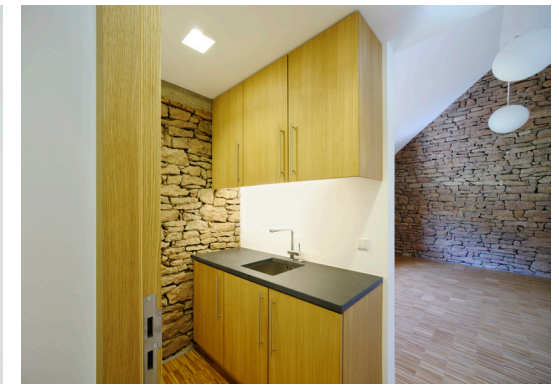
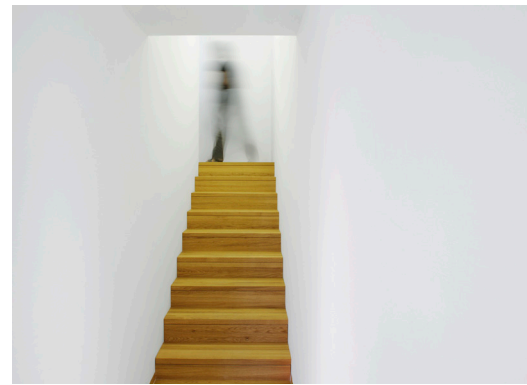
project **conversion of a former barn into a day care centre for children** client **Gemeinde Mondcange (LUX)** planning services **WW+** complete architecture services partner: civil engineering **GK engineering, Esch-sur-Alzette (LUX)** gfa **305 m²** gv **1.490 m³** net construction costs **460.000 €** total gross costs **622.150 €** start of planning **03/2010** realisation **08/2010 - 09/2011**

History

Prior to the redesign of 'Rue de l'Eglise' and the 'Parc Central' in the centre of Mondcange, the town was home to a kindergarten on the project perimeter: a one-storey building providing a makeshift home to the 'Garderie WibbeldeWapp'. Due to the state of the building and its configuration, the decision was made in the context of the project to pull it down. The barn belonging to the Schuh building right next to the 'Crèche Gréngé Pimpampel' was acquired by the municipal council and so, at short notice, it became the new location for the garderie as a day care centre for infants.

Concept

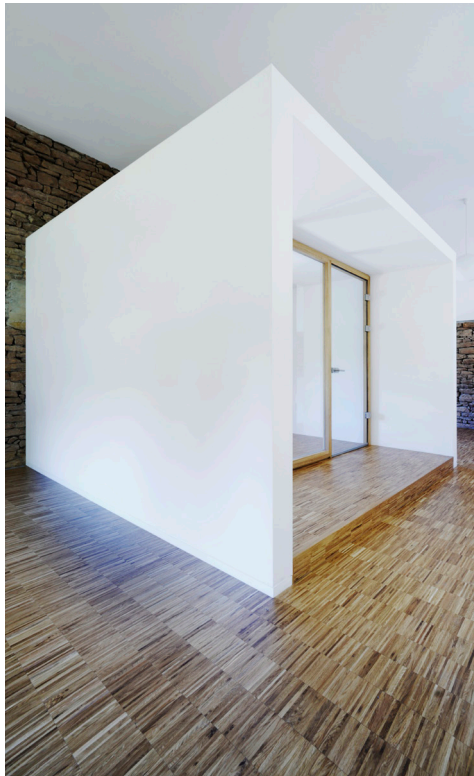
The structural concept incorporates the renovation of the building while retaining as much of the old barn structure as possible and while taking into account the new use requirements of a day care centre. To complement the garderie, a new children's playground has been created, which can also be used by the neighbouring crèche. This new ensemble and its synergy effect has led to an overall enhancement of Rue de l'Eglise and the entire centre, both from a structural and design point of view.

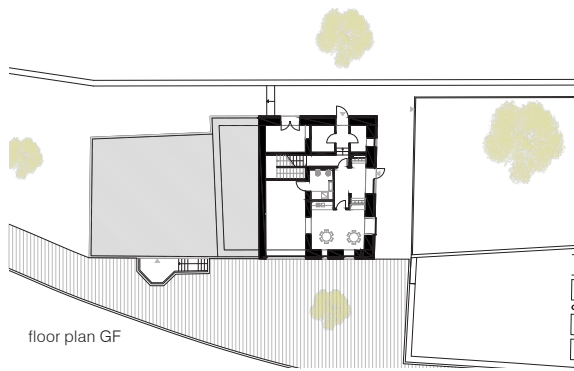


Building structure and interior concept

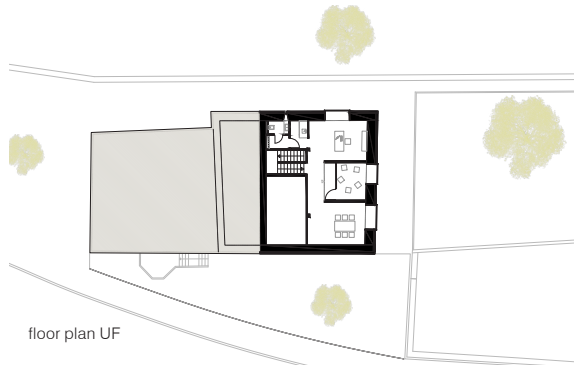
The existing building was essentially characterised by the single-storey 'stable box' and the hayloft above it. The barn is a large L-shaped room that opens up to the roof. The design of the day care centre takes into account requirements and specifications for infants. The room layout includes a new side entrance area featuring a cloakroom and a group room with a kitchenette. A second level can be reached via a staircase – outside the children's zone – and houses the administrative areas. This level is divided

up by a conference cube, which provides the necessary tranquillity for one-on-one talks. The design and appearance of the interior architecture are strongly characterised by the unrendered masonry of the former barn. Cleaned and hydrophobed, it provides a striking backdrop. In combination with the oak material and the white walls, the rooms project an overall simple and clear effect. The openings in the upper level provide light and are framed by oak boards on the inside. These provide a welcoming niche





floor plan GF



floor plan UF

from which to admire the view onto the new park. New window openings have been placed to project slightly out on the façade to make them clearly visible as new openings. Here the same expression of form has been used as with the sandstone frames on the front façade.

The floor surfaces – bar the entrance area and the sanitary facilities – are covered primarily with oak lamella parquet laid edgewise. The interior decorations, such as built-in furniture for the kitchen, cupboards and the shelving, are all custom-made.

Sustainability concept

The garderie with its sandstone masonry structure and wooden beam ceilings as well as its roof cladding of cement fibre boards has been given a contemporary overhaul that places emphasis on sustainability.

The lower floor has been given a new floor slab; this was carried out according to the latest technology in terms of energy saving regulations.

The insulation material of wood shavings was used as the façade insulation and the full-rafter insulation. In each case, the material thickness called for 200 mm. The interior side of the roof was given additional wood shaving insulation of 50 mm. This natural resource grows quickly and is in all respects the best insulating material from an ecological point of view.

Recycling and phase shifting are just a couple of the buzzwords associated with this natural resource.

The ventilation system ensures a good hygienic air exchange and provides the children with fresh oxygen. In combination with the underfloor heating, the newly installed gas heating unit, beneficial due to its natural gas connection, ensures a comfortable climate inside the building.

