

## New construction of a music school, Lüdenscheid (GER)

Project	<b>Construction of the new music school with a multipurpose room for the city of Lüdenscheid</b>
Awarding authority	<b>City of Lüdenscheid (GER)</b>
Award	<b>1st prize, restricted intern. realisation competition</b>
Services	<b>WW+, Esch-sur-Alzette (LUX) / Trier (GER) competition / commission of architecture services</b>
Rendering	rendertaxi, Aachen (GER)
Facts	<ul style="list-style-type: none"><li>• <b>20 classrooms of different sizes</b></li><li>• <b>multifunctional event hall for about 100 people</b></li><li>• <b>spacious atrium staircase</b></li></ul>
Publications	<b>Musikschule, Lüdenscheid (2016)</b> <b>Wettbewerb Aktuell (02/2017)</b>
Dates and numbers	
gfa	<b>2.664 m<sup>2</sup></b>
ufa	<b>1.536 m<sup>2</sup></b>
gv	<b>12.627 m<sup>3</sup></b>
total area	<b>0,28 ha</b>
construction costs	<b>4.148.000 € net</b>
total costs	<b>5.688.000 € gross</b>
competition phase	<b>06/2016 - 08/2016</b>
realisation	<b>12/2019 - 02/2022</b>

### Urban planning concept

The particularity of the site at the spacious crossroads area of Hochstraße and Staberger Straße in the midst of a heterogeneous development of various uses and eras provides only tangential specifications for urban planning references. Only the unique topography, the vegetation worthy of preservation and the graduated heights of the neighbouring buildings have an influence on the design. The result is a basic concept of the music school as a standalone structure.

The three-storey new construction is designed in line with considerations of the urban development concept of the city of Lüdenscheid and deliberately positioned on the northwest site boundary. Due to its spatial positioning, the structure forms the heart of the quarter, the starting and focal point between educational institutions, residential area and old town. As a result of its location within the exterior space, it is a key feature of the start of the quarter.



Figure ground plan



Siteplan

### Decision by the project award jury

The height and location of the three-storey structure is a perfect fit for its urban environment, making a positive impact on the surroundings. Skillful integration of the architecture into the topography has created a clear entrance and site configuration, as well as extensive landscaping and functional terraces. The entrance of the building with a spacious lobby overlooking the old town and correctly positioned entrance is the right solution for this project. It functions simultaneously as the main entrance and reception area of the new music school. The building's clear façade, with its simple, geometric lines, could form a harmonious connection to Lüdenscheid's Old Town. Brick as a visually pleasing and haptic substance, but also durable and timeless material for buildings and open space use, is best for this project. One critic is that rather than invoking symmetry, the façade could inspire a bit more tension.



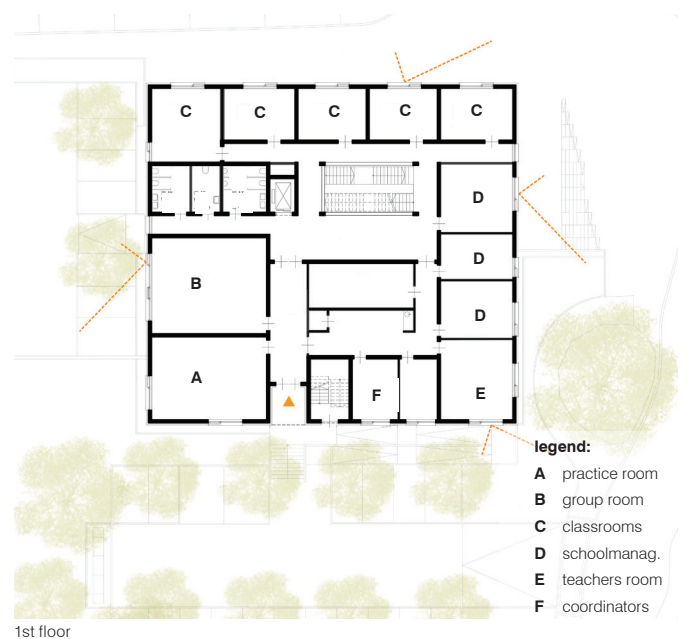
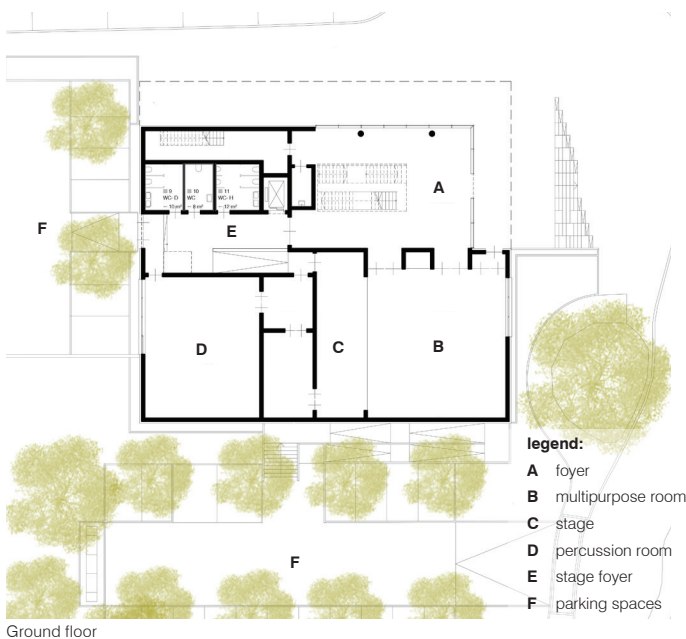
Perspective competition, corner 'Hochstraße' / 'Staberger Straße'



Construction site 05/2022

Facade 'Staberger Straße' and main entrance

The layout of the lobby areas on the ground floor, with multifunctional hall and percussion room easily accessible to users and visitors, as well as the delivery area, is a good and fully functional use of space. Similarly, the two upper floors featuring practice rooms and administrative areas around the cleverly positioned development centers and adjoining rooms, is an effective concept that stands out well. The design is fundamentally easy to implement and is in the middle range of all key financial criteria, except in traffic surfaces, where it exceeds the average. Critically, the jury noted that the open orientation of the lobby to the southwest and the associated projection of the main part of the building does not have the same urban significance as the street and northeast part with the entrance and in this area an improvement of the architectural and urban planning aspects seems possible, not to mention achieving some savings. Similarly, the jury misses a differentiation of the projection over the three glass façades of the lobby to accommodate their urban bearing. The design of the percussion room and of the multifunctional hall does not include natural lighting.





Multifunktionsraum

